



# EAGLE WALK STAGE 10

Falken Hut – Karwendelhaus Lodge

You may have already dreamed of summit-ing more peaks during your night on **Falken Hut**, at foot of the Laliderer Wände, however, you will start your day ambling down through rolling Alpine meadows. Beyond **Ladizalm Alpine Pasture Hut**, a dirt road winds down through a forest to **Kleiner Ahornboden**; a “smaller cousin” of the nearby fabled Großer Ahornboden, with many old growth sycamore maples – but less crowded. Take some time to contemplate the serenity of nature, but, as you are here for mountaineering, your feet will quickly get used to climbing uphill again as you head northward into **Lower Filztal Valley**. From there, a short climb, gaining 400 metres in elevation, takes you up to **Karwendelhaus Lodge**.

<b>Starting Point</b>	Falken Hut
<b>Destination</b>	Karwendelhaus Lodge
<b>Distance</b>	9 Kilometer
<b>Elevation ↑</b>	440 m
<b>Elevation ↓</b>	520 m
<b>Hiking Time</b>	3.5 Hours
<b>Difficulty</b>	Intermediate (red)



## Eagle Alpine History

**Hermann von Barth**, the “**Bagger of Peaks**”. This stage takes you past the **Hermann von Barth-Monument** at Kleiner Ahornboden. Hermann von Barth (1845 – 1876) was a **jurist** and **natural scientist from the Bavarian Alpine Foreland who became well known for his exploration of the Karwendel Mountains**. In the summer of 1870, he climbed 88 peaks, 12 of which were **first ascents**, including Birkkarspitze, Kaltwasserkarspitze, Lalidererspitze, Große Seekarspitze, Grubenkarspitze, Dreizinkenspitze, Eastern Karwendelspitze, Vogelkarspitze, Wörner and Kuhkopf. **Many names of mountain huts, trails and peaks**, such as Barthspitze Peak, today **bear his name** and are witness to the services of Hermann von Barth in opening up the Karwendel Mountains to the average walker.



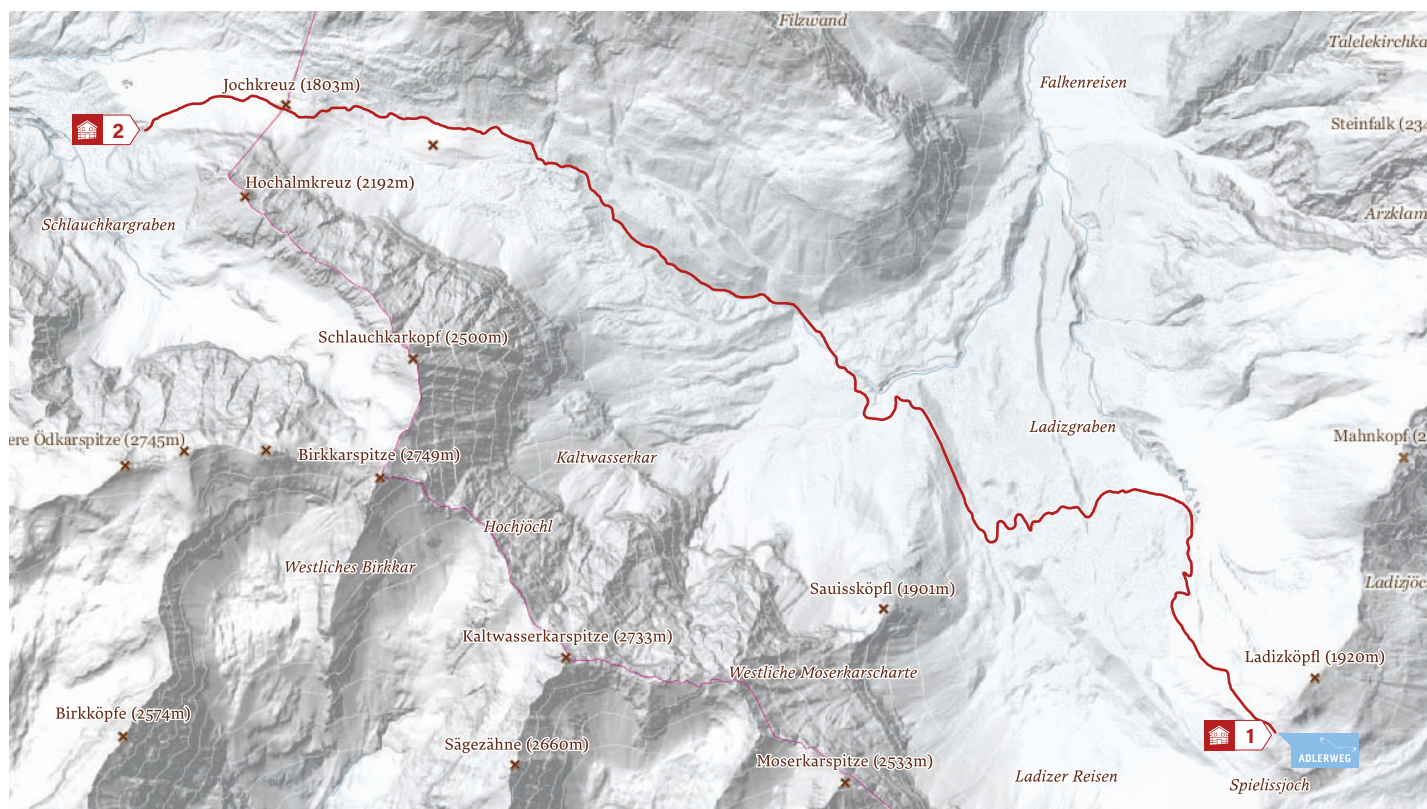
### EAGLEKICK

**Kleiner Ahornboden** is an Alpine plateau of **gnarled sycamore maples** and a myriad of plant and animal life. It is a “smaller cousin” of the nearby fabled Großer Ahornboden, but less crowded as there is no access road leading there. Simply contemplate your good fortune while sitting under the canopy of a stately, 500-year old tree, surrounded by pure mountain beauty.



### EAGLEVIEW

A historically interesting highlight along this walk is the picturesque **Ladizalm Alpine Pasture Hut**, which was presumably **built in the 16<sup>th</sup> century**. At Hochalm Saddleback, you will be surrounded by gorgeous landscapes. Catch your breath and scan the horizon from Jochkreuz Cross at its top. Can you identify **Birkkarspitze Peak**, which you will summit on Eagle Walk Stage 11?



## Trailside Eateries & Accommodations

- 1 Falken Hut
- 2 Karwendelhaus Lodge

## Trail Description

From **Falken Hut**, head northward following signage to “Karwendelhaus” and stroll down on the well-maintained trail leading through Alpine meadows. Continue further downhill on a forest road and pass lovely **Ladizalm** and its historic Alpine pasture hut. Keep to the forest road as you stroll down through thinning forest. Having crossed the wide boulder riverbed, which is usually dry, the trail will merge with a broad forest road. This road takes you to the **memorial commemorating mountaineer Hermann von Barth** and to the ancient forester’s lodges situated slightly above it. Follow the forest road, passing the forester’s lodges, and continue uphill towards “Karwendelhaus”.

The forest road will soon become a mere dirt track as it leads through thinning forest, and later you will be walking on a simple footpath. This path takes you gently uphill through pleasant Lower Filztal Valley, before leading further upwards into Alpine meadows, without changing direction. After a little while the path will merge with a logging road that takes you uphill along the meadows until you reach **Hochalmsattel Saddleback** (elev. 1,803m) with a cross on its summit. If the weather is clear, you’ll have wonderful views of surrounding peaks, Laliderer Wände and Falken Hut below. From the saddleback, you will stroll down and turn left towards **Karwendelhaus Lodge**, situated at an elevation of 1,765 metres. The fine mountain lodge, with their astounding views (especially at sunset, when the Alpenglow has the surrounding peaks aflame with orange light), is a tempting place to spend the night.

### MORE DETAILS:

#### Alpine Auskunft

Meinhardstraße 7-11  
6020 Innsbruck

+43.512.58 78 28 t

+43.512.58 88 42 f

info@alpine-auskunft.at e